

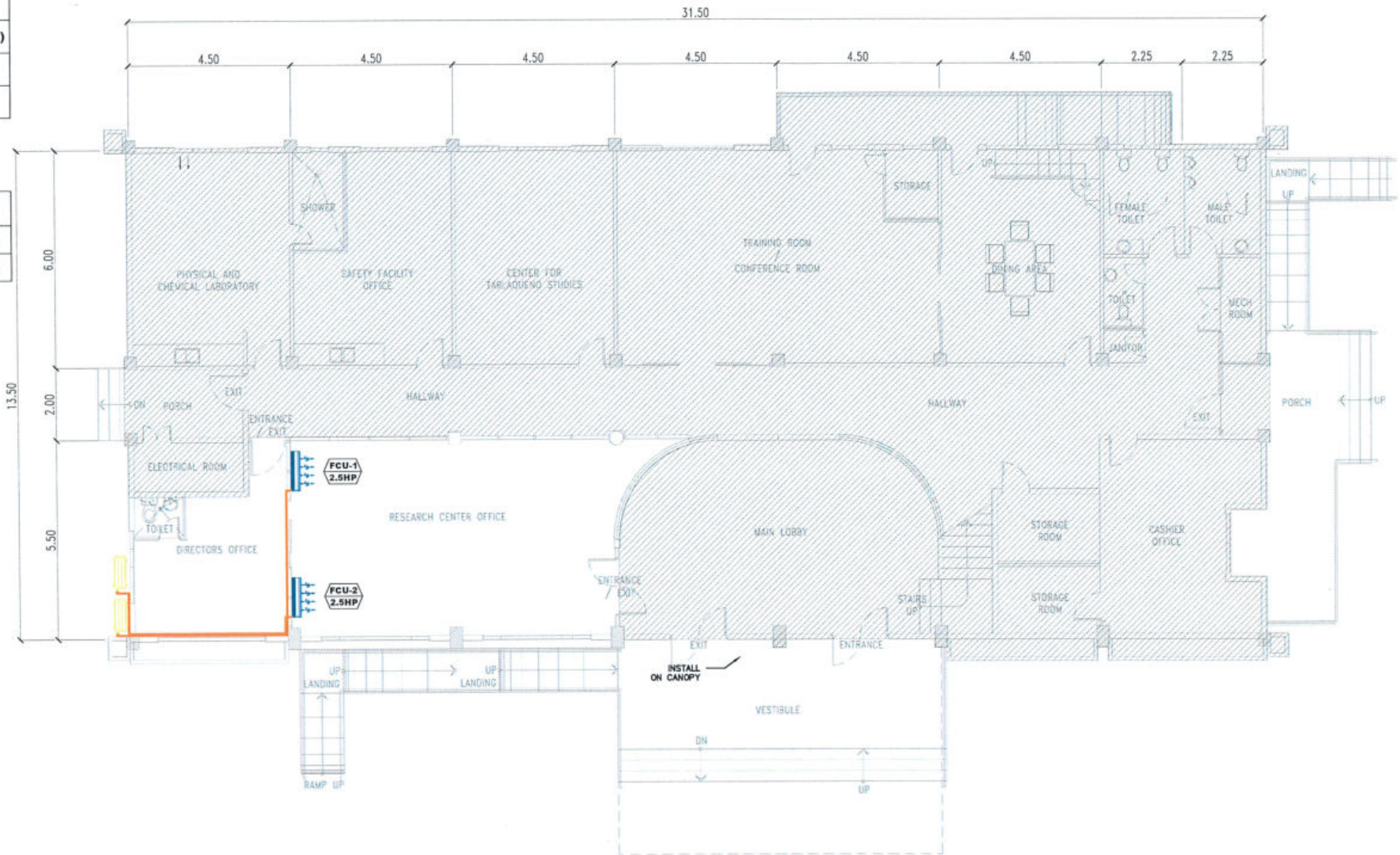
**LEGEND:**

	- AC INDOOR UNIT (FCU)
	- AC OUTDOOR UNIT
	- COPPER TUBE

UNIT	LOCATION	TYPE	REMARKS
FCU-1 2.5 HP	EXTENSION SERVICES OFFICE	WALL MOUNTED	ADDITIONAL
FCU-2 2.5 HP	EXTENSION SERVICES OFFICE	WALL MOUNTED	ADDITIONAL






**NOTE:**

- THE PROPOSED LAYOUT FOR THE LOCATION OF THE AIR CONDITIONING UNIT IS IN ACCORDANCE WITH THE INFORMATION GIVEN BY THE REQUESTING OFFICE.
- VERIFY ON SITE THE PROPOSED ACTUAL LOCATIONS (HEIGHT AND DISTANCE) OF EQUIPMENT (INDOOR AND OUTDOOR UNIT) PRIOR TO CONSTRUCTION.



**EXTENSION SERVICES MANAGEMENT OFFICE AIR CONDITIONING SYSTEM LAYOUT**

SCALE 1:120 M

  <p>TARLAC STATE UNIVERSITY Facilities Development and Management Office Rozales Boulevard, Tarlac City, Pinarangalan 2100</p>	PROJECT TITLE: AIR CONDITIONING UNIT PIPING SYSTEM	PREPARED BY:  ENGR. JOHN MYRO B. GANARA MECHANICAL ENGINEER, OFDM	CHECKED BY:  AR. ARLEN M. GUIEB AEC-DIRECTOR, OFDM	REQUESTING OFFICE:  ENGR. EMIR LENARD S.F. SICANGCO DIRECTOR, DUES	SHEET CONTENTS: AS SHOWN	SHEET NO.: M-1
	PROJECT LOCATION: TARLAC STATE UNIVERSITY	DATE: 1 / 19	PAGE NO.: 1 / 19			



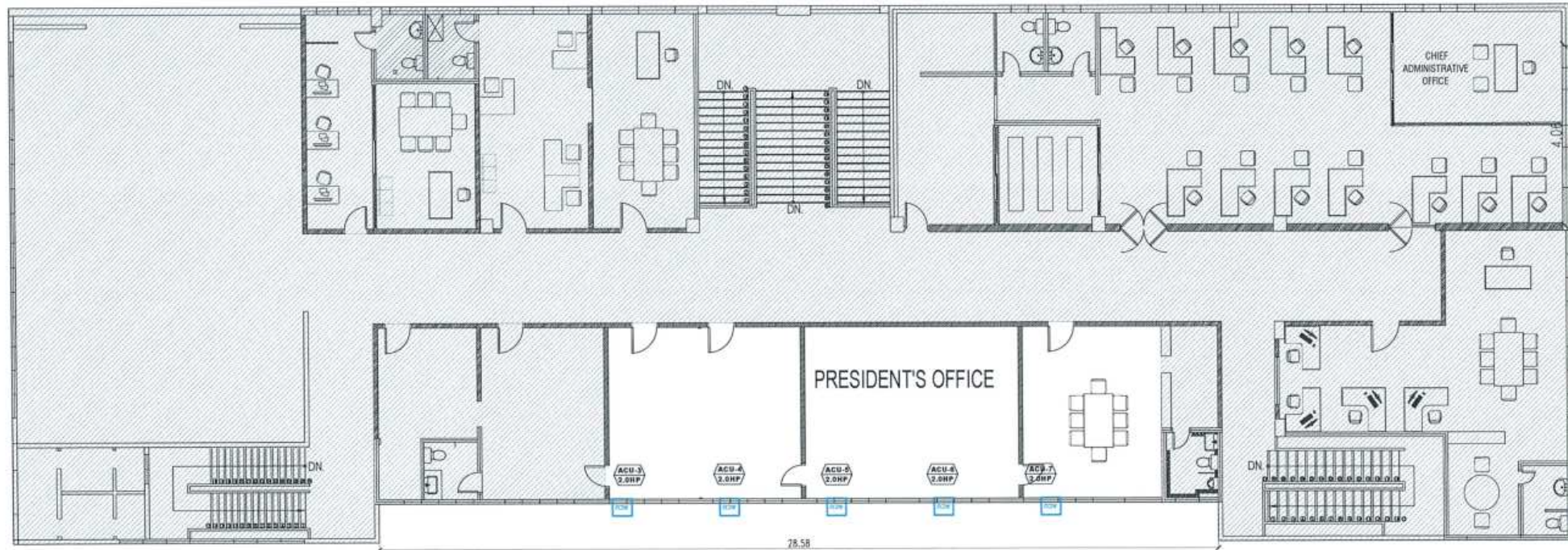
**LEGEND:**

ACU - ACU (WINDOW TYPE)

UNIT	LOCATION	TYPE	REMARKS
ACU-1 2.0 HP	ADMIN. BUILDING	WINDOW TYPE	REPLACEMENT
ACU-2 2.0 HP	ADMIN. BUILDING	WINDOW TYPE	REPLACEMENT
ACU-3 2.0 HP	ADMIN. BUILDING	WINDOW TYPE	REPLACEMENT
ACU-4 2.0 HP	ADMIN. BUILDING	WINDOW TYPE	REPLACEMENT
ACU-5 2.0 HP	ADMIN. BUILDING	WINDOW TYPE	REPLACEMENT

**NOTE:**

- THE PROPOSED LAYOUT FOR THE LOCATION OF THE AIR CONDITIONING UNIT IS IN ACCORDANCE WITH THE INFORMATION GIVEN BY THE REQUESTING OFFICE.
- VERIFY ON SITE THE PROPOSED ACTUAL LOCATIONS (HEIGHT AND DISTANCE) OF EQUIPMENT (INDOOR AND OUTDOOR UNIT) PRIOR TO CONSTRUCTION.



**OFFICE OF THE UNIVERSITY PRESIDENT AIR CONDITIONING SYSTEM LAYOUT**

SCALE 1:150 M



**TARLAC STATE UNIVERSITY**  
Facilities Development and Management Office  
Rommel Ambrosio, Tarlac City Pkg. 0000 1100

PROJECT TITLE:  
AIR CONDITIONING UNIT PIPING SYSTEM

PROJECT LOCATION:  
TARLAC STATE UNIVERSITY

PREPARED BY:  
*[Signature]*  
ENGR. JOY MYRO B. GANARA  
TECHNICAL ENGINEER, OFDM

CHECKED BY:  
*[Signature]*  
AR. ARLEN M. GUIEB  
DIC-DIRECTOR, OFDM

REQUESTING OFFICE:  
*[Signature]*  
DR. ARNOLD E. VELASCO  
PRESIDENT

SHEET CONTENTS:  
AS SHOWN

SHEET NO.:  
M-2

PAGE NO.:  
2 / 19

DATE:



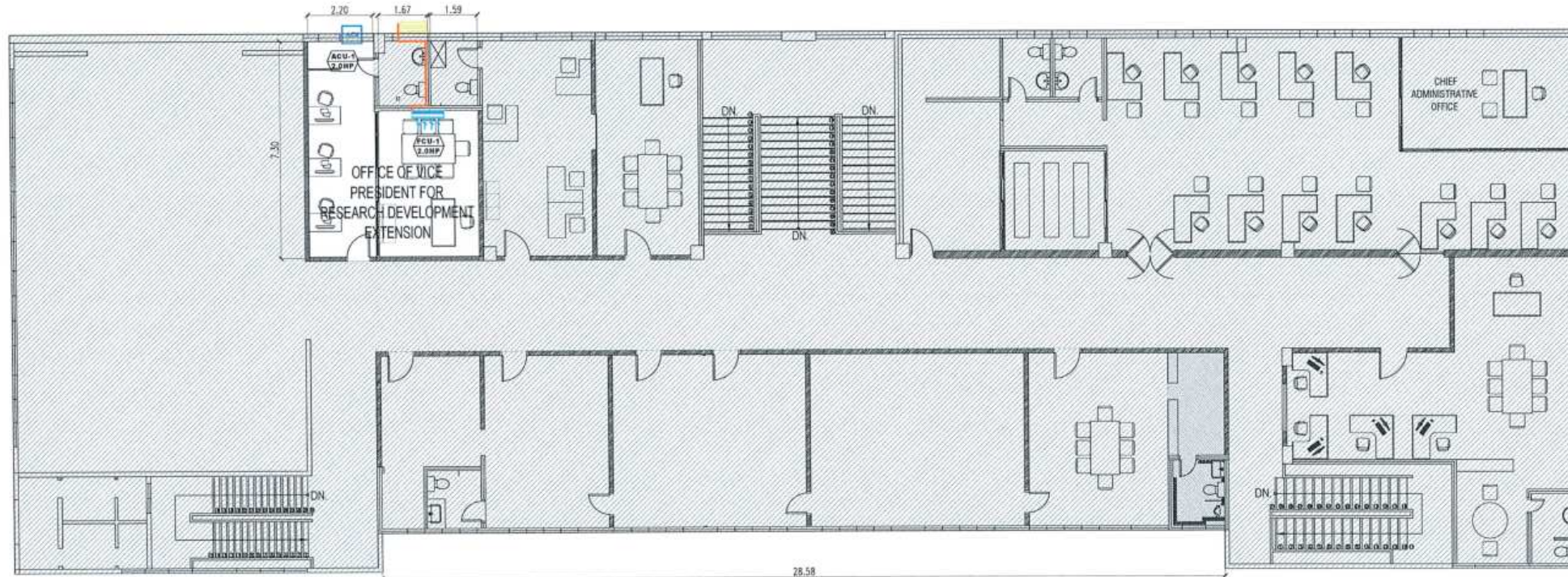
**LEGEND:**

	- AC INDOOR UNIT (FCU)
	- AC OUTDOOR UNIT
	- COPPER TUBE
	- ACU (WINDOW TYPE)

UNIT	LOCATION	TYPE	REMARKS
FCU-1 2.0 HP	ADMIN. BUILDING	WALL MOUNTED	REPLACEMENT
ACU-1 2.0 HP	ADMIN. BUILDING	WINDOW TYPE	REPLACEMENT

**NOTE:**

- THE PROPOSED LAYOUT FOR THE LOCATION OF THE AIR CONDITIONING UNIT IS IN ACCORDANCE WITH THE INFORMATION GIVEN BY THE REQUESTING OFFICE.
- VERIFY ON SITE THE PROPOSED ACTUAL LOCATIONS (HEIGHT AND DISTANCE) OF EQUIPMENT (INDOOR AND OUTDOOR UNIT) PRIOR TO CONSTRUCTION.



**OFFICE OF THE VICE PRES. FOR RESEARCH DEVELOPMENT AND EXTENSION  
AIR CONDITIONING SYSTEM LAYOUT**

SCALE 1:150 M



**TARLAC STATE UNIVERSITY**  
Facilities Development and  
Management Office  
Romulo Mindoro, Tarlac City, Philippines 3100

PROJECT TITLE: AIR CONDITIONING UNIT PIPING SYSTEM
PROJECT LOCATION: TARLAC STATE UNIVERSITY

PREPARED BY:  
  
ENGR. JOHN MYRO B. GANARA  
MECHANICAL ENGINEER, OFDM

CHECKED BY:  
  
AR. ARLEN M. GUIEB  
A/C-DIRECTOR, OFDM

REQUESTING OFFICE:  
  
DR. WILMAR J. RAMOS  
VICE PRESIDENT, OVP/ICE

SHEET CONTENTS: AS SHOWN	SHEET NO.: M-3
DATE:	PAGE NO.: 3 / 19



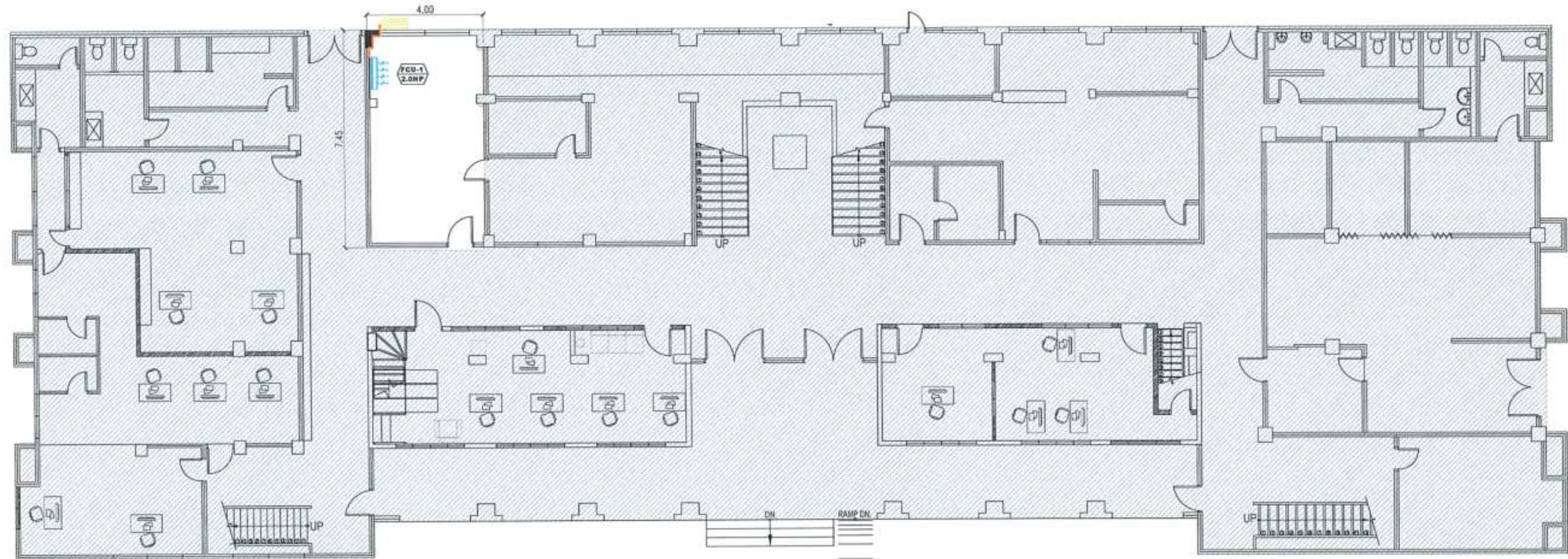
**LEGEND:**

	- AC INDOOR UNIT (FCU)
	- AC OUTDOOR UNIT
	- COPPER TUBE

UNIT	LOCATION	TYPE	REMARKS
FCU-1 2.0 HP	ADMIN. BUILDING	WALL MOUNTED	REPLACEMENT

**NOTE:**

- THE PROPOSED LAYOUT FOR THE LOCATION OF THE AIR CONDITIONING UNIT IS IN ACCORDANCE WITH THE INFORMATION GIVEN BY THE REQUESTING OFFICE.
- VERIFY ON SITE THE PROPOSED ACTUAL LOCATIONS (HEIGHT AND DISTANCE) OF EQUIPMENT (INDOOR AND OUTDOOR UNIT) PRIOR TO CONSTRUCTION.



**ACCOUNTING OFFICE AIR CONDITIONING SYSTEM LAYOUT**


SCALE 1:150 M



**TARLAC STATE UNIVERSITY**  
Facilities Development and  
Management Office  
Avenue Boulevard, Tarlac City, Philippines 3100

PROJECT TITLE:	AIR CONDITIONING UNIT PIPING SYSTEM
PROJECT LOCATION:	TARLAC STATE UNIVERSITY

PREPARED BY:	 ENGR. JOHN MYRO B. GANARA MECHANICAL ENGINEER, OFDM
--------------	---

CHECKED BY:	 AR. ARLEN M. GUIEB OIC-DIRECTOR, OFDM
-------------	---

REQUESTING OFFICE:	 MR. RYAN R. RONQUILLO ACCOUNTING OFFICE
--------------------	---

SHEET CONTENTS:	AS SHOWN	SHEET NO.:	M-4
DATE:		PAGE NO.:	4 / 19



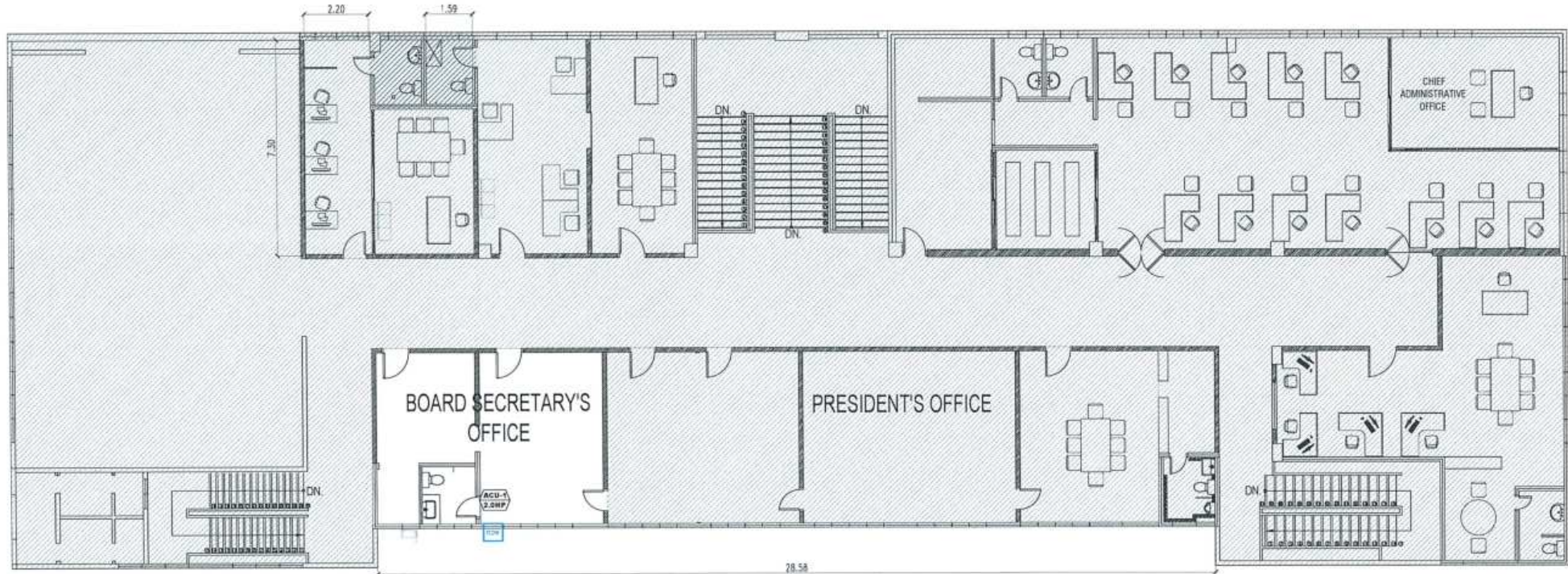
**LEGEND:**

ACU - ACU (WINDOW TYPE)

UNIT	LOCATION	TYPE	REMARKS
ACU-1 2.0 HP	ADMIN. BUILDING	WINDOW TYPE	REPLACEMENT

**NOTE:**

- THE PROPOSED LAYOUT FOR THE LOCATION OF THE AIR CONDITIONING UNIT IS IN ACCORDANCE WITH THE INFORMATION GIVEN BY THE REQUESTING OFFICE.
- VERIFY ON SITE THE PROPOSED ACTUAL LOCATIONS (HEIGHT AND DISTANCE) OF EQUIPMENT (INDOOR AND OUTDOOR UNIT) PRIOR TO CONSTRUCTION.



**OFFICE OF THE UNIVERSITY/BOARD SECRETARY AIR CONDITIONING SYSTEM LAYOUT**

SCALE 1:150 M



**TARLAC STATE UNIVERSITY**  
Facilities Development and Management Office  
Bansal Building, Tarlac City, Philippines 2300

PROJECT TITLE:  
AIR CONDITIONING UNIT PIPING SYSTEM

PROJECT LOCATION:  
TARLAC STATE UNIVERSITY

PREPARED BY:  
*J. Ganera*  
ENGR. JOHNNY B. GANERA  
MECHANICAL ENGINEER, OFDM

CHECKED BY:  
*Arllen M. Guieb*  
AR. ARLEN M. GUIEB  
OIC-DIRECTOR, OFDM

REQUESTING OFFICE:  
*Aurelia Valencia*  
MS. AURELIA VALENCIA  
UNIVERSITY AND BOARD OF REGENTS SECRETARY

SHEET CONTENTS:  
AS SHOWN

SHEET NO.:  
M-5

PAGE NO.:  
5 / 19

DATE:



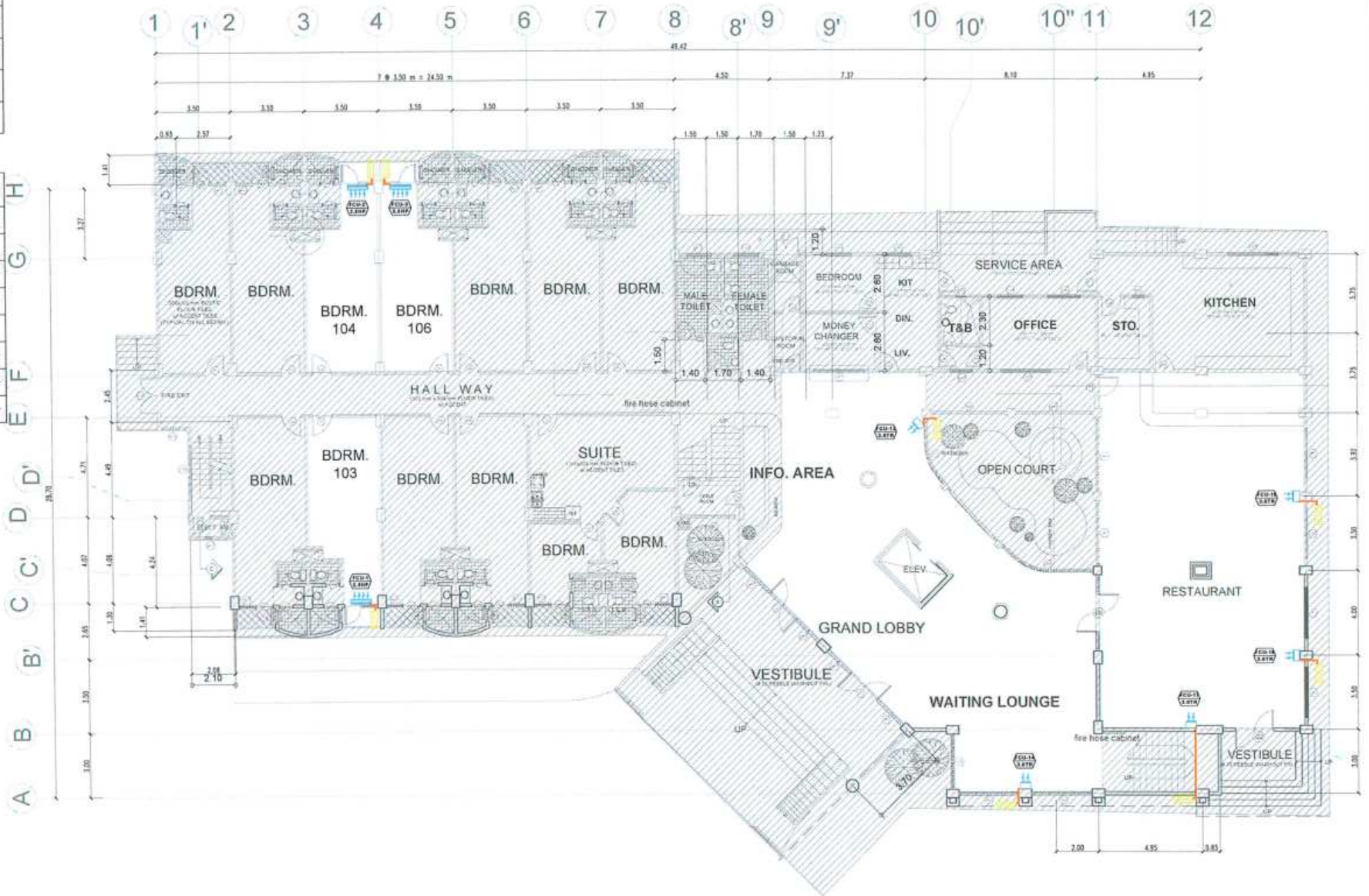
**LEGEND:**

	- AC INDOOR UNIT (FCU)
	- AC INDOOR UNIT (FCU)
	- AC OUTDOOR UNIT
	- COPPER TUBE

UNIT	LOCATION	TYPE	REMARKS
FCU-1 2.5 HP	BEDROOM 103	WALL MOUNTED	REPLACEMENT
FCU-2 2.5 HP	BEDROOM 104	WALL MOUNTED	REPLACEMENT
FCU-3 2.5 HP	BEDROOM 106	WALL MOUNTED	REPLACEMENT
FCU-13 3.0TR	HOTEL LOBBY	FLOOR MOUNTED	REPLACEMENT
FCU-14 3.0TR	HOTEL LOBBY	FLOOR MOUNTED	ADDITIONAL
FCU-15 3.0TR	CAFE LUCINDA	FLOOR MOUNTED	REPLACEMENT
FCU-16 3.0TR	CAFE LUCINDA	FLOOR MOUNTED	REPLACEMENT
FCU-17 3.0TR	CAFE LUCINDA	FLOOR MOUNTED	REPLACEMENT

**NOTE:**

- THE PROPOSED LAYOUT FOR THE LOCATION OF THE AIR CONDITIONING UNIT IS IN ACCORDANCE WITH THE INFORMATION GIVEN BY THE REQUESTING OFFICE.
- VERIFY ON SITE THE PROPOSED ACTUAL LOCATIONS (HEIGHT AND DISTANCE) OF EQUIPMENT (INDOOR AND OUTDOOR UNIT) PRIOR TO CONSTRUCTION.



**TSU HOTEL GROUND FLOOR AIR CONDITIONING SYSTEM LAYOUT**  
SCALE 1:200 M

<p><b>TARLAC STATE UNIVERSITY</b> Facilities Development and Management Office Remata Boulevard, Tarlac City, Philippines 3102</p>	PROJECT TITLE:	PREPARED BY:	CHECKED BY:	REQUESTING OFFICE:	SHEET CONTENTS:	SHEET NO.:
	AIR CONDITIONING UNIT PIPING SYSTEM				AS SHOWN	M-6
PROJECT LOCATION:	TARLAC STATE UNIVERSITY	ENGR. JOHN MYRO B. GANARA MECHANICAL ENGINEER, OFDM	MR. ARLEN M. GUIEL DIC DIRECTOR, OFDM	MIR. VON REY M. REYES MANAGER, HOTEL	DATE:	PAGE NO. 6 / 17



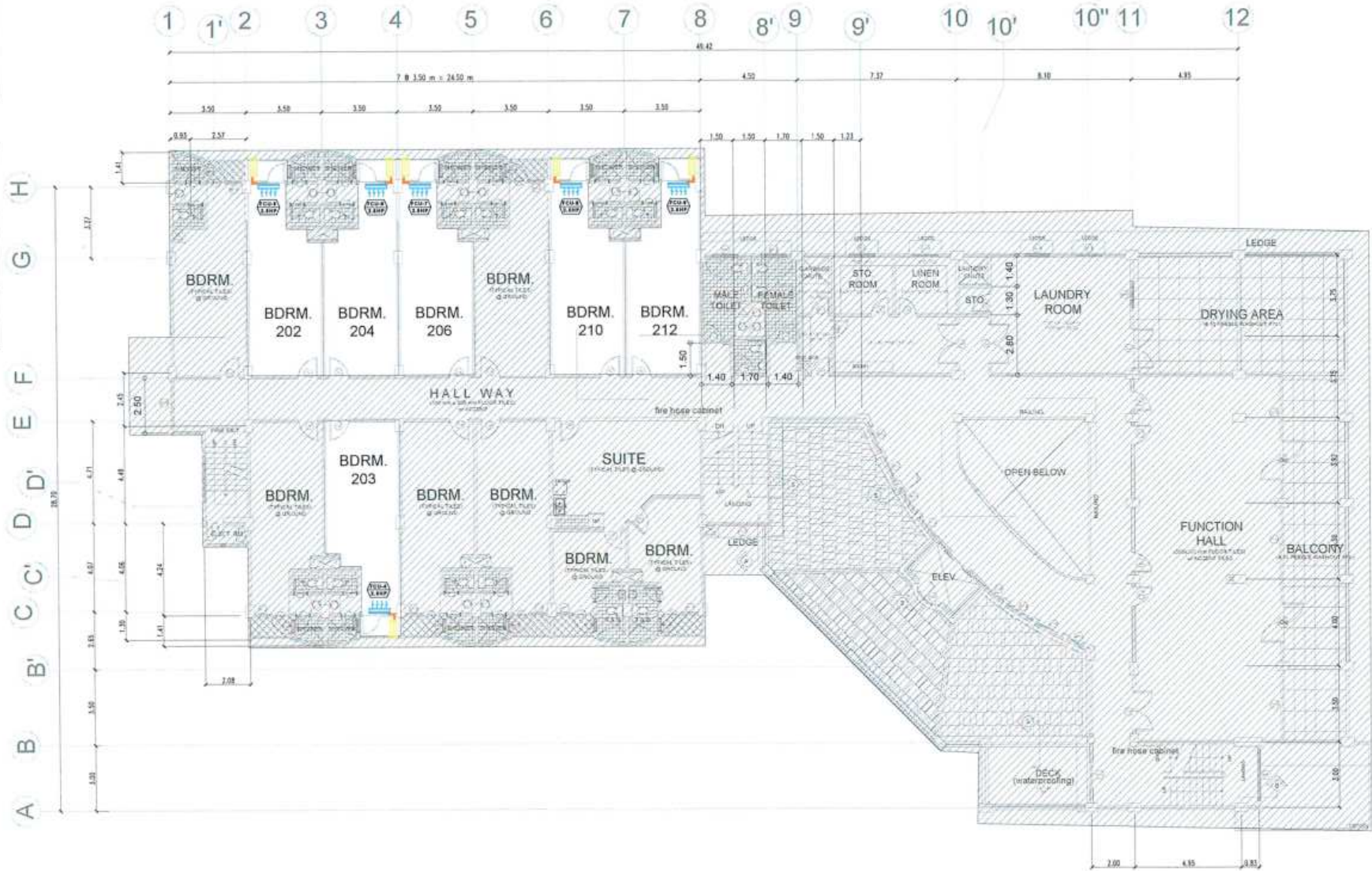
**LEGEND:**

	- AC INDOOR UNIT (FCU)
	- AC OUTDOOR UNIT
	- COPPER TUBE





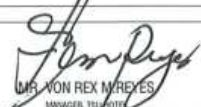
UNIT	LOCATION	TYPE	REMARKS
FCU-4 2.5 HP	BEDROOM 203	WALL MOUNTED	REPLACEMENT
FCU-5 2.5 HP	BEDROOM 202	WALL MOUNTED	REPLACEMENT
FCU-6 2.5 HP	BEDROOM 204	WALL MOUNTED	REPLACEMENT
FCU-7 2.5 HP	BEDROOM 206	WALL MOUNTED	REPLACEMENT
FCU-8 2.5 HP	BEDROOM 210	WALL MOUNTED	REPLACEMENT
FCU-9 2.5 HP	BEDROOM 212	WALL MOUNTED	REPLACEMENT

**NOTE:**

- THE PROPOSED LAYOUT FOR THE LOCATION OF THE AIR CONDITIONING UNIT IS IN ACCORDANCE WITH THE INFORMATION GIVEN BY THE REQUESTING OFFICE.
- VERIFY ON SITE THE PROPOSED ACTUAL LOCATIONS (HEIGHT AND DISTANCE) OF EQUIPMENT (INDOOR AND OUTDOOR UNIT) PRIOR TO CONSTRUCTION.



**TSU HOTEL SECOND FLOOR AIR CONDITIONING SYSTEM LAYOUT**  
SCALE 1:200 M

  <p>TARLAC STATE UNIVERSITY Facilities Development and Management Office Ranada Bldg., Tarlac City, Philippines 3301</p>	PROJECT TITLE: AIR CONDITIONING UNIT PIPING SYSTEM	PREPARED BY:  ENGR. JOHN MYRO B. GANARA MECHANICAL ENGINEER, OFDM	CHECKED BY:  AR. ARLEN M. GUIES DIC-DIRECTOR, OFDM	REQUESTING OFFICE:  MR. VON REX M. REYES MANAGER, TSP/OT	SHEET CONTENTS: AS SHOWN	SHEET NO.: M-7
	PROJECT LOCATION: TARLAC STATE UNIVERSITY	DATE: 7 / 17	PAGE NO.: 7 / 17			



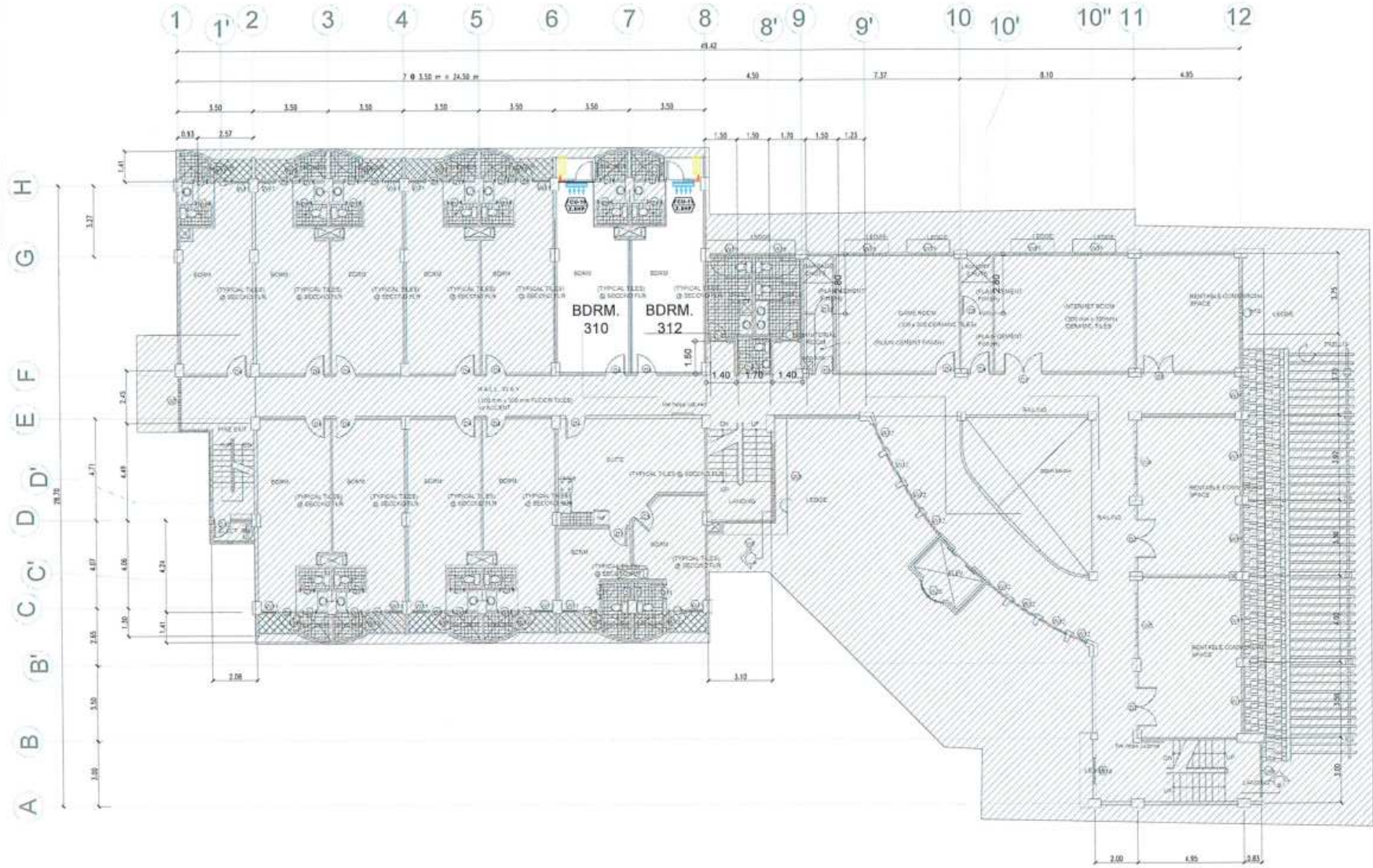
**LEGEND:**

	- AC INDOOR UNIT (FCU)
	- AC OUTDOOR UNIT
	- COPPER TUBE






UNIT	LOCATION	TYPE	REMARKS
FCU-10 2.5 HP	BEDROOM 319	WALL MOUNTED	REPLACEMENT
FCU-11 2.5 HP	BEDROOM 312	WALL MOUNTED	REPLACEMENT

**NOTE:**

- THE PROPOSED LAYOUT FOR THE LOCATION OF THE AIR CONDITIONING UNIT IS IN ACCORDANCE WITH THE INFORMATION GIVEN BY THE REQUESTING OFFICE.
- VERIFY ON SITE THE PROPOSED ACTUAL LOCATIONS (HEIGHT AND DISTANCE) OF EQUIPMENT (INDOOR AND OUTDOOR UNIT) PRIOR TO CONSTRUCTION.



**TSU HOTEL THIRD FLOOR AIR CONDITIONING SYSTEM LAYOUT**  
SCALE 1:200 M

  <p>TARLAC STATE UNIVERSITY Facilities Development and Management Office Rommel Road, Tarlac City, Philippines 3100</p>	PROJECT TITLE: AIR CONDITIONING UNIT PIPING SYSTEM	PREPARED BY:  ENGR. JOHN MYRO B. GANARA MECHANICAL ENGINEER, OFDM	CHECKED BY:  MR. ARLEN M. GUIEB DIC DIRECTOR, OFDM	REQUESTING OFFICE:  MR. VON REX M. REYES MANAGER, TSU HOTEL	SHEET CONTENTS: AS SHOWN	SHEET NO.: M-8
	PROJECT LOCATION: TARLAC STATE UNIVERSITY					PAGE NO.: 8 / 17



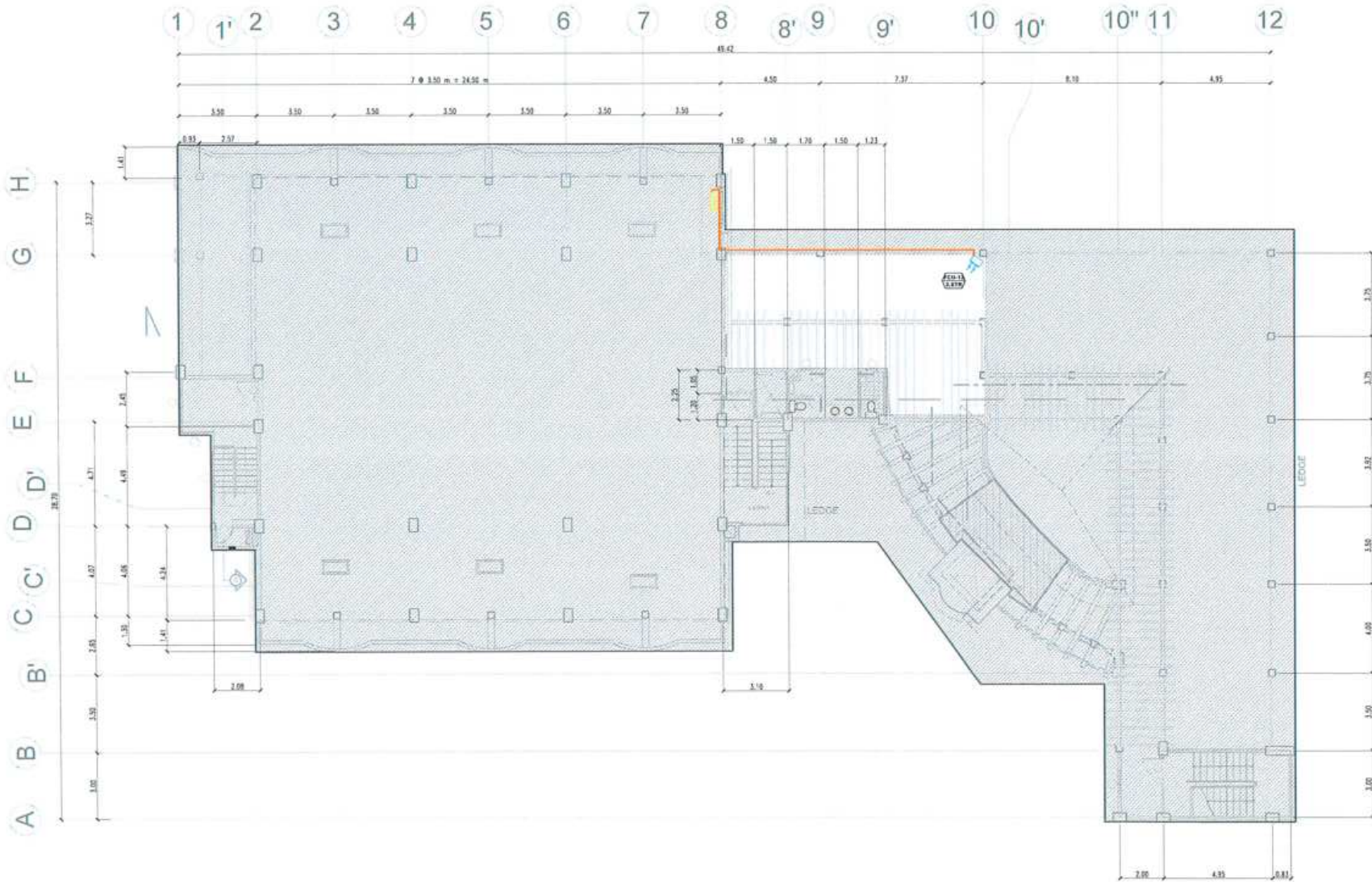
**LEGEND:**

	- AC INDOOR UNIT (FCU)
	- AC OUTDOOR UNIT
	- COPPER TUBE





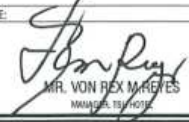
UNIT	LOCATION	TYPE	REMARKS
FCU-12 3.0 TR	5TH FLOOR LOBBY	FLOOR MOUNTED	ADDITIONAL

**NOTE:**

- THE PROPOSED LAYOUT FOR THE LOCATION OF THE AIR CONDITIONING UNIT IS IN ACCORDANCE WITH THE INFORMATION GIVEN BY THE REQUESTING OFFICE.
- VERIFY ON SITE THE PROPOSED ACTUAL LOCATIONS (HEIGHT AND DISTANCE) OF EQUIPMENT (INDOOR AND OUTDOOR UNIT) PRIOR TO CONSTRUCTION.



**TSU HOTEL FIFTH FLOOR AIR CONDITIONING SYSTEM LAYOUT**  
SCALE 1:200 M

  <p><b>TARLAC STATE UNIVERSITY</b> Facilities Development and Management Office Araneta Boulevard, Tarlac City, Philippines 2202</p>	PROJECT TITLE:	PREPARED BY:	CHECKED BY:	REQUESTING OFFICE:	SHEET CONTENTS:	SHEET NO.:
	AIR CONDITIONING UNIT PIPING SYSTEM	 ENGR. JOHN MYRO B. GANARA MECHANICAL ENGINEER, OFDM	 AR. ARLEN M. QUIJ AIC DIRECTOR, OFDM	 MR. VON REX M. REYES MANAGER, TSU HOTEL	AS SHOWN	M-9
	PROJECT LOCATION:					PAGE NO.:
	TARLAC STATE UNIVERSITY					9 / 17
						DATE:



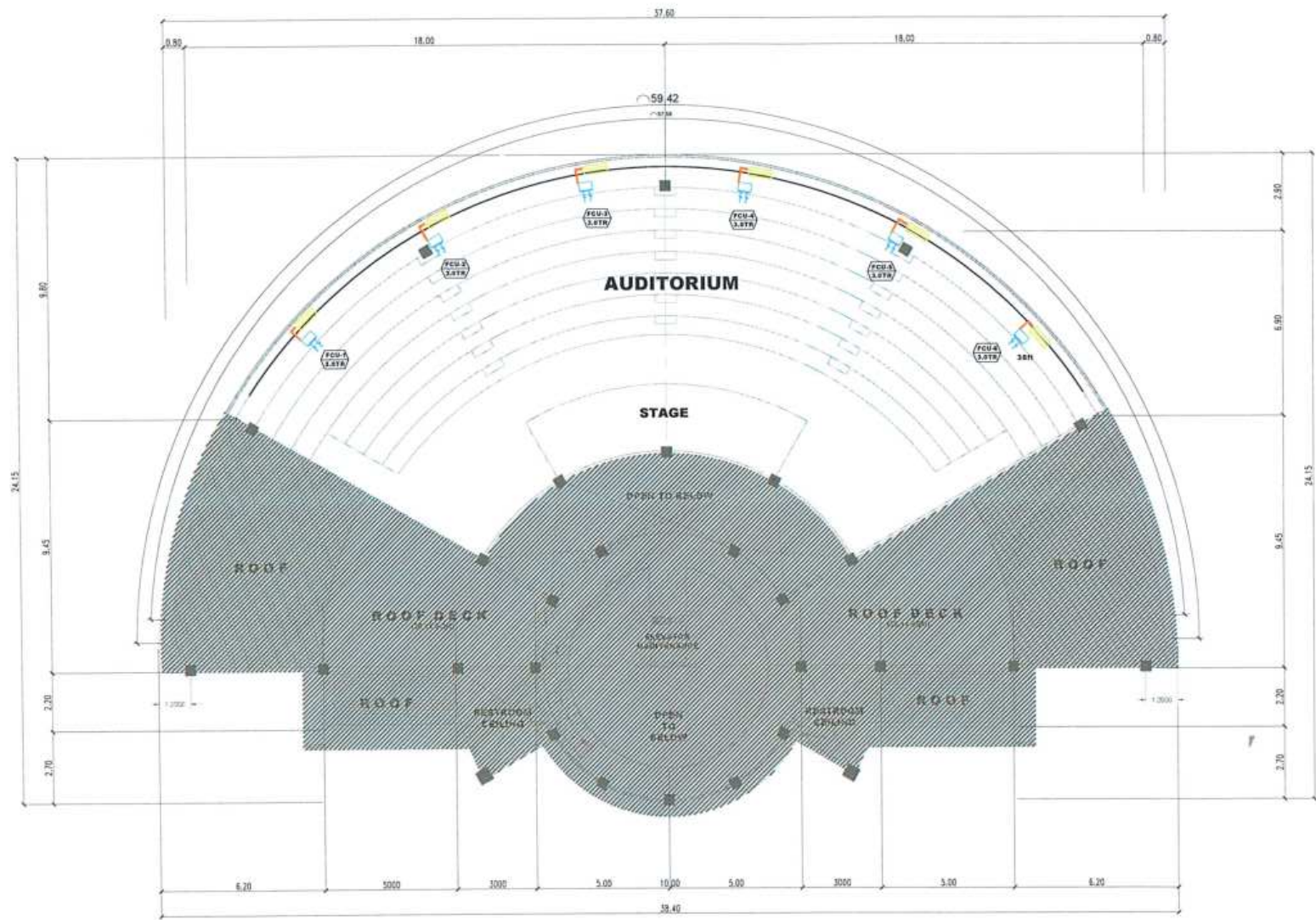
**LEGEND:**

	- AC INDOOR UNIT (FCU)
	- AC OUTDOOR UNIT
	- COPPER TUBE

UNIT	LOCATION	TYPE	REMARKS
FCU-1 3.0 TR	AVR	FLOOR MOUNTED	ADDITIONAL
FCU-2 3.0 TR	AVR	FLOOR MOUNTED	ADDITIONAL
FCU-3 3.0 TR	AVR	FLOOR MOUNTED	ADDITIONAL
FCU-4 3.0 TR	AVR	FLOOR MOUNTED	ADDITIONAL
FCU-5 3.0 TR	AVR	FLOOR MOUNTED	ADDITIONAL
FCU-6 3.0 TR	AVR	FLOOR MOUNTED	ADDITIONAL

**NOTE:**

- THE PROPOSED LAYOUT FOR THE LOCATION OF THE AIR CONDITIONING UNIT IS IN ACCORDANCE WITH THE INFORMATION GIVEN BY THE REQUESTING OFFICE.
- VERIFY ON SITE THE PROPOSED ACTUAL LOCATIONS (HEIGHT AND DISTANCE) OF EQUIPMENT (INDOOR AND OUTDOOR UNIT) PRIOR TO CONSTRUCTION.



**STUDENT CENTER AVR AIR CONDITIONING SYSTEM LAYOUT**  
SCALE 1:175 M

<p><b>TARLAC STATE UNIVERSITY</b> Facilities Development and Management Office Nanda Boulevard, Tarlac City, Philippines 3309</p>	PROJECT TITLE:	PREPARED BY:	CHECKED BY:	REQUESTING OFFICE:	SHEET CONTENTS:	SHEET NO.:
	AIR CONDITIONING UNIT PIPING SYSTEM	ENGR. JOHY MYRO B. GANARA MECHANICAL ENGINEER, OFCM	AR. ARLEN M. QUIEB SIC-DIRECTOR, OFCM	PROF. GHEROLD C. BENITEZ DIRECTOR, OFAS	AS SHOWN	M-10
PROJECT LOCATION:	TARLAC STATE UNIVERSITY					PAGE NO.:
						10/19
						DATE:



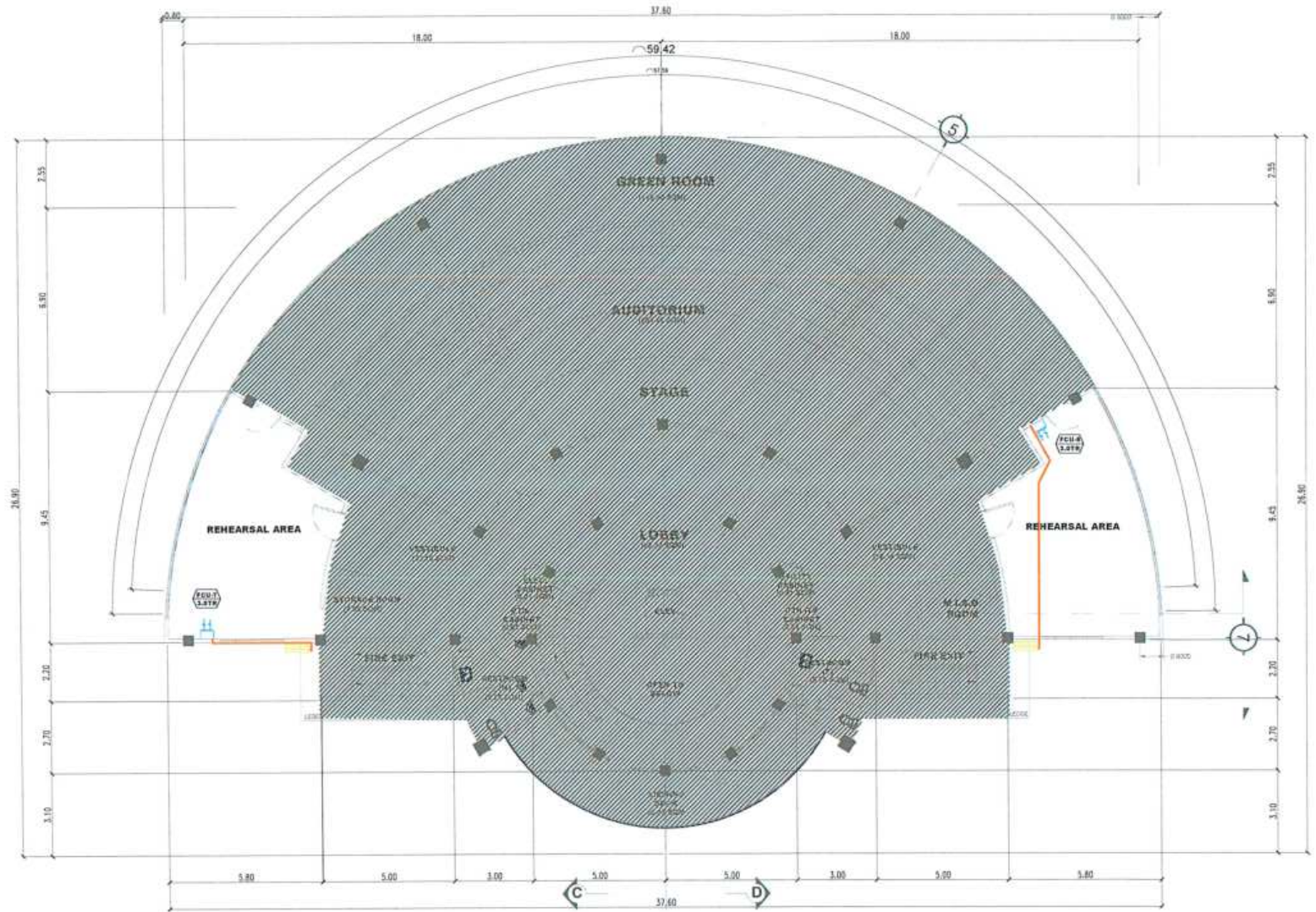
**LEGEND:**

	- AC INDOOR UNIT (FCU)
	- AC OUTDOOR UNIT
	- COPPER TUBE


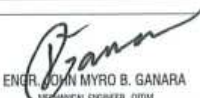


UNIT	LOCATION	TYPE	REMARKS
FCU-7 3.0 TR	RIGHT REHEARSAL ROOM	FLOOR MOUNTED	ADDITIONAL
FCU-8 3.0 TR	LEFT REHEARSAL ROOM	FLOOR MOUNTED	ADDITIONAL

**NOTE:**

- THE PROPOSED LAYOUT FOR THE LOCATION OF THE AIR CONDITIONING UNIT IS IN ACCORDANCE WITH THE INFORMATION GIVEN BY THE REQUESTING OFFICE.
- VERIFY ON SITE THE PROPOSED ACTUAL LOCATIONS (HEIGHT AND DISTANCE) OF EQUIPMENT (INDOOR AND OUTDOOR UNIT) PRIOR TO CONSTRUCTION.



**STUDENT CENTER AVR REHEARSAL ROOMS AIR CONDITIONING SYSTEM LAYOUT**  
SCALE 1:175 M

 <b>TARLAC STATE UNIVERSITY</b> Facilities Development and Management Office <small>Sancti Spiritus Road, Tarlac City, Philippines 3100</small>	PROJECT TITLE:	PREPARED BY:	CHECKED BY:	REQUESTING OFFICE:	SHEET CONTENTS:	SHEET NO.:
	AIR CONDITIONING UNIT PIPING SYSTEM	 ENGR. JOHN MYRO B. GANARA MECHANICAL ENGINEER, OFDM	 AR. ARLEN M. GUEB AEC-DIRECTOR, OFDM	 PROF. GHEROLD C. BENITEZ DIRECTOR, OSAS	AS SHOWN	M-11
PROJECT LOCATION:	TARLAC STATE UNIVERSITY				PAGE NO.:	11/19
					DATE:	



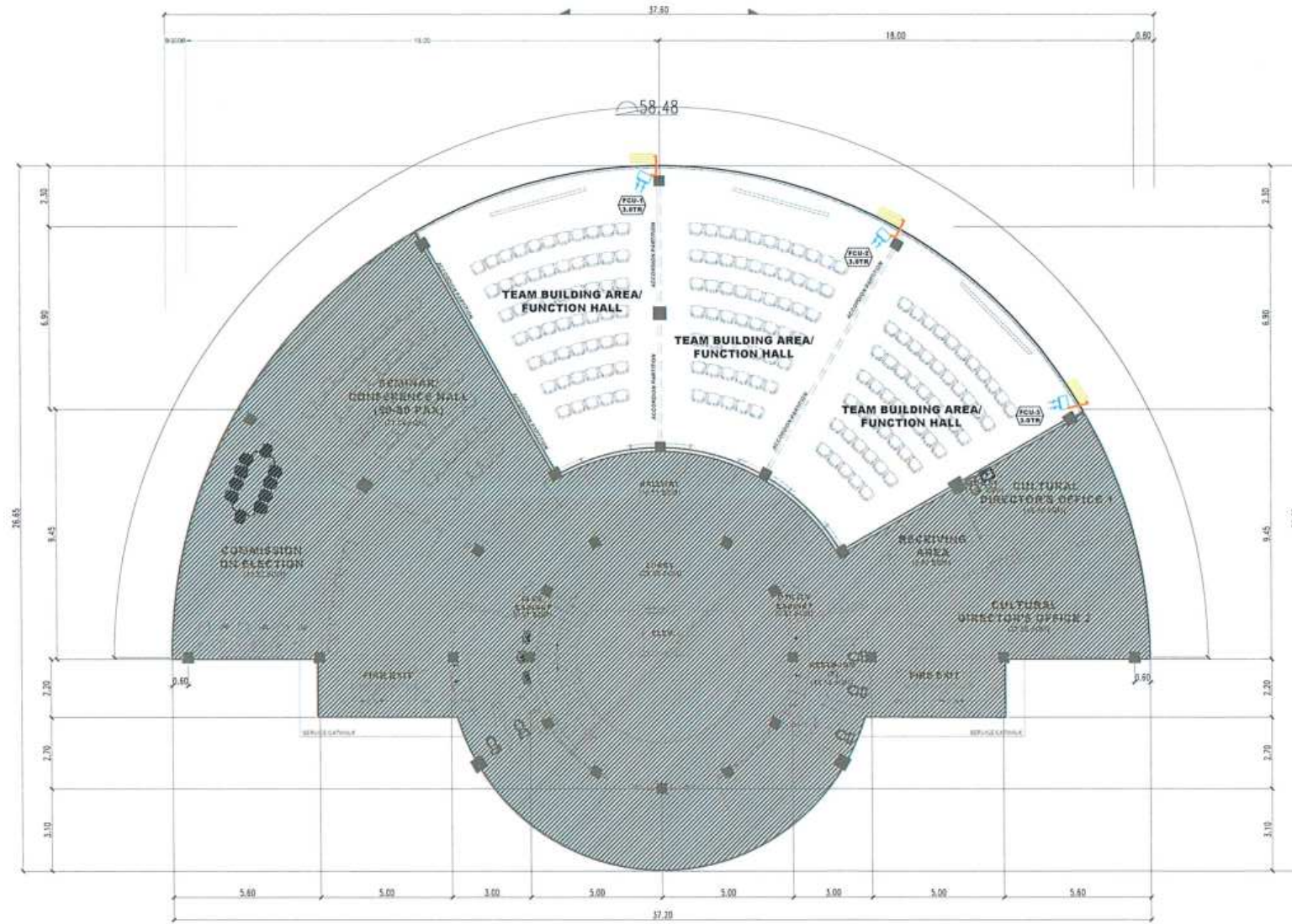
**LEGEND:**

	- AC INDOOR UNIT (FCU)
	- AC OUTDOOR UNIT
	- COPPER TUBE

UNIT	LOCATION	TYPE	REMARKS
FCU-1 3.0 TR	TESTING OFFICE	FLOOR MOUNTED	ADDITIONAL
FCU-2 3.0 TR	TESTING OFFICE	FLOOR MOUNTED	ADDITIONAL
FCU-3 3.0 TR	TESTING OFFICE	FLOOR MOUNTED	ADDITIONAL

**NOTE:**

- THE PROPOSED LAYOUT FOR THE LOCATION OF THE AIR CONDITIONING UNIT IS IN ACCORDANCE WITH THE INFORMATION GIVEN BY THE REQUESTING OFFICE.
- VERIFY ON SITE THE PROPOSED ACTUAL LOCATIONS (HEIGHT AND DISTANCE) OF EQUIPMENT (INDOOR AND OUTDOOR UNIT) PRIOR TO CONSTRUCTION.

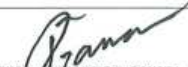


**TESTING OFFICE AIR CONDITIONING SYSTEM LAYOUT**  
SCALE 1:175 M




**TARLAC STATE UNIVERSITY**  
Facilities Development and Management Office  
Kamala Richards, Tarlac City, Philippines 3100

PROJECT TITLE:  
AIR CONDITIONING UNIT PIPING SYSTEM  
PROJECT LOCATION:  
TARLAC STATE UNIVERSITY

PREPARED BY:  
  
ENGR. JOHN MYRO B. GANARA  
MECHANICAL ENGINEER, OFDM

CHECKED BY:  
  
AR. ARLEN M. QUIJE  
OIC-DIRECTOR, OFDM

REQUESTING OFFICE:  
  
DR. ROSANNA PUBLICO  
STUDENT WELFARE SERVICES UNIT

SHEET CONTENTS:  
AS SHOWN  
DATE:  
SHEET NO.:  
M 12  
PAGE NO.:  
12 / 19



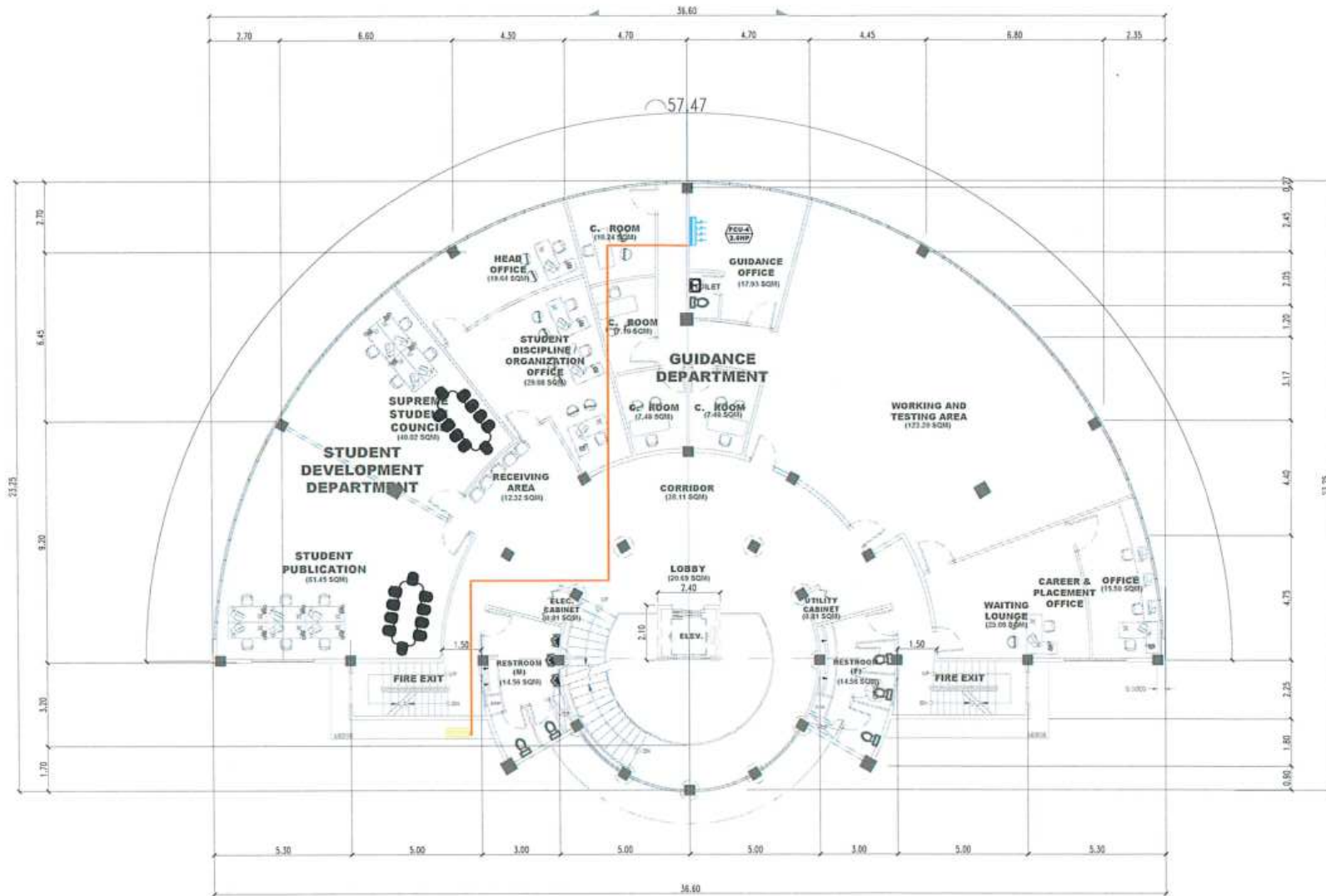
**LEGEND:**

	- AC INDOOR UNIT (FCU)
	- AC OUTDOOR UNIT
	- COPPER TUBE


UNIT	LOCATION	TYPE	REMARKS
FCU-4 2.0 HP	GUIDANCE OFFICE	WALL MOUNTED	REPLACEMENT

**NOTE:**

- THE PROPOSED LAYOUT FOR THE LOCATION OF THE AIR CONDITIONING UNIT IS IN ACCORDANCE WITH THE INFORMATION GIVEN BY THE REQUESTING OFFICE.
- VERIFY ON SITE THE PROPOSED ACTUAL LOCATIONS (HEIGHT AND DISTANCE) OF EQUIPMENT (INDOOR AND OUTDOOR UNIT) PRIOR TO CONSTRUCTION.




**TESTING OFFICE AIR CONDITIONING SYSTEM LAYOUT**  
SCALE 1:175 M

 <p><b>TARLAC STATE UNIVERSITY</b> Facilities Development and Management Office Avenida MacArthur, Tarlac City, Philippines 3301</p>	PROJECT TITLE:	PREPARED BY:	CHECKED BY:	REQUESTING OFFICE:	SHEET CONTENTS:	SHEET NO.:
	AIR CONDITIONING UNIT PIPING SYSTEM	ENGR. JOHNNY B. GANARA TECHNICAL ENGINEER, OFDM	AR. ARLEN M. QUIEB DIC-DIRECTOR, OFDM	DR. ROSANNA PABLICO STUDENT WELFARE SERVICES UNIT	AS SHOWN	M 13
PROJECT LOCATION:	TARLAC STATE UNIVERSITY				DATE:	PAGE NO. 13 / 19



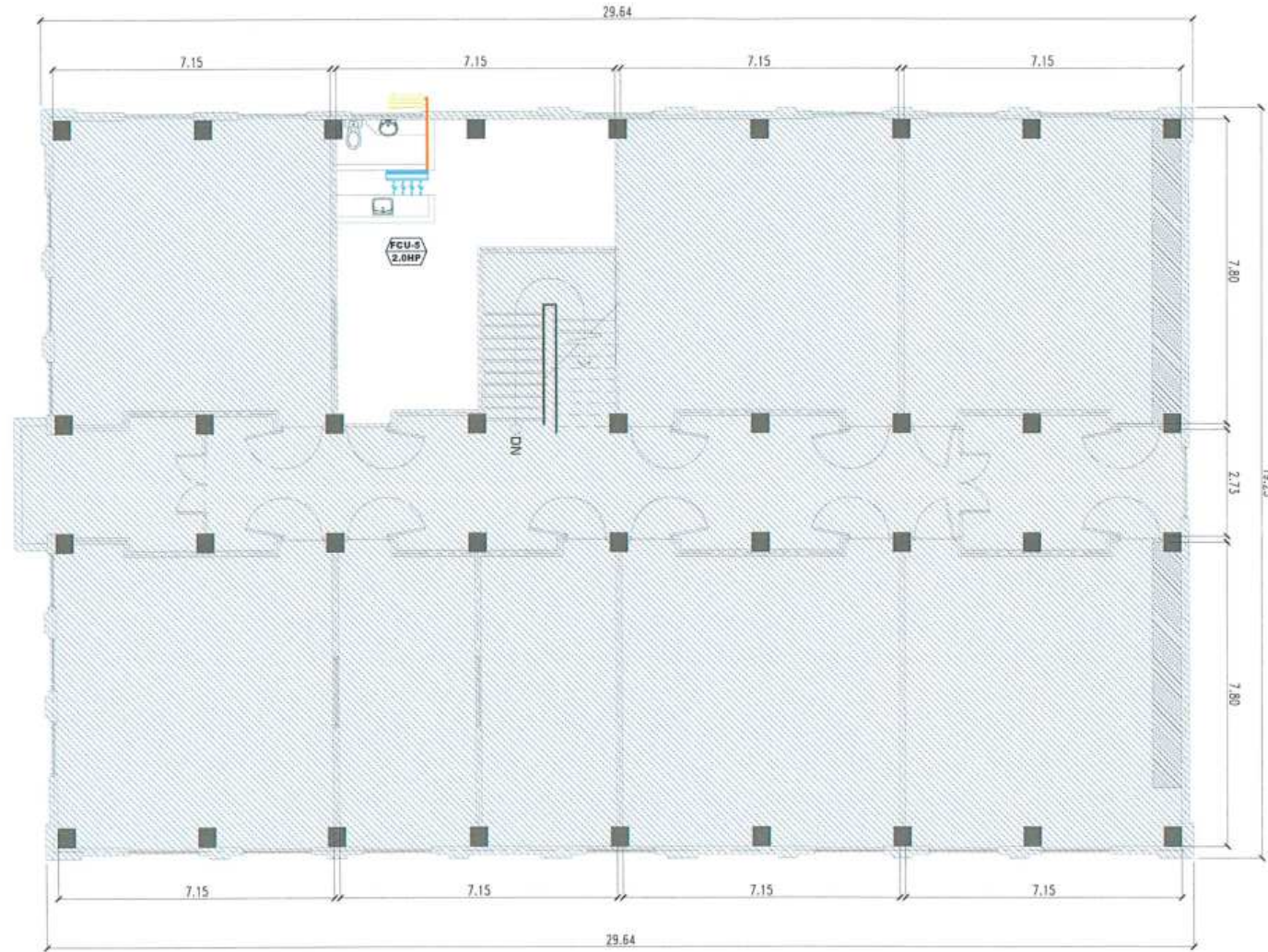
**LEGEND:**

	- AC INDOOR UNIT (FCU)
	- AC OUTDOOR UNIT
	- COPPER TUBE






UNIT	LOCATION	TYPE	REMARKS
	CET GUIDANCE OFFICE	WALL MOUNTED	REPLACEMENT

**NOTE:**

- THE PROPOSED LAYOUT FOR THE LOCATION OF THE AIR CONDITIONING UNIT IS IN ACCORDANCE WITH THE INFORMATION GIVEN BY THE REQUESTING OFFICE.
- VERIFY ON SITE THE PROPOSED ACTUAL LOCATIONS (HEIGHT AND DISTANCE) OF EQUIPMENT (INDOOR AND OUTDOOR UNIT) PRIOR TO CONSTRUCTION.





**CET GUIDANCE OFFICE AIR CONDITIONING SYSTEM LAYOUT**  
SCALE 1:130 M

  <p><b>TARLAC STATE UNIVERSITY</b> Facilities Development and Management Office Rampasak Building, Tarlac City, Pampanga 3300</p>	PROJECT TITLE: AIR CONDITIONING UNIT PIPING SYSTEM	PREPARED BY:  ENGR. JOHN MYRO B. GANARA MECHANICAL ENGINEER, CPDM	CHECKED BY:  AR. ARLEN M. GUIEB CIC-DIRECTOR, CPDM	REQUESTING OFFICE:  DR. ROSANNA PABLICO STUDENT WELFARE SERVICES UNIT	SHEET CONTENTS: AS SHOWN	SHEET NO.: M 14
	PROJECT LOCATION: TARLAC STATE UNIVERSITY	DATE: 14 / 19	PAGE NO.:			



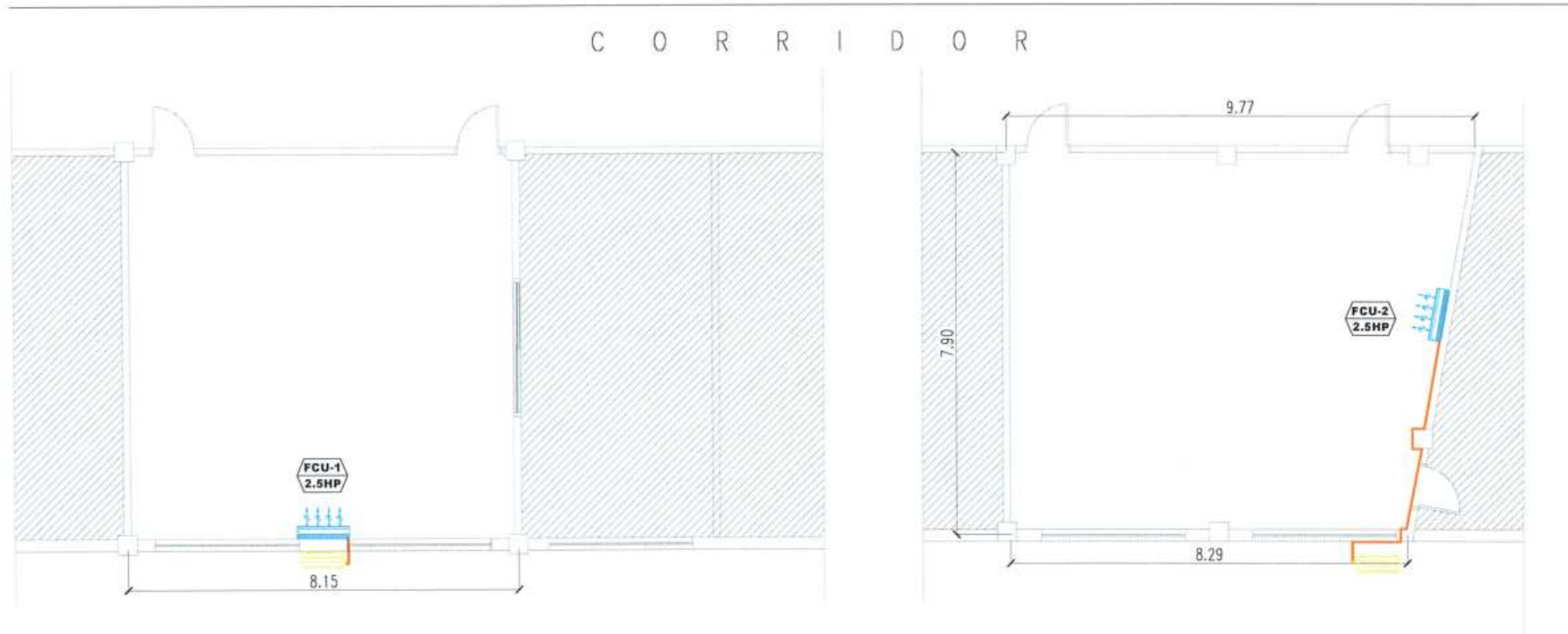
**LEGEND:**

	- AC INDOOR UNIT (FCU)
	- AC OUTDOOR UNIT
	- COPPER TUBE

UNIT	LOCATION	TYPE	REMARKS
FCU-1 2.5HP	THESIS ROOM	WALL MOUNTED	ADDITIONAL
FCU-2 2.5HP	DIRECTOR'S OFFICE	WALL MOUNTED	ADDITIONAL


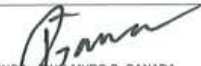


**NOTE:**

- THE PROPOSED LAYOUT FOR THE LOCATION OF THE AIR CONDITIONING UNIT IS IN ACCORDANCE WITH THE INFORMATION GIVEN BY THE REQUESTING OFFICE.
- VERIFY ON SITE THE PROPOSED ACTUAL LOCATIONS (HEIGHT AND DISTANCE) OF EQUIPMENT (INDOOR AND OUTDOOR UNIT) PRIOR TO CONSTRUCTION.



**MAIN CAMPUS LIBRARY AIR CONDITIONING SYSTEM LAYOUT**

SCALE 1:100 M

 <b>TARLAC STATE UNIVERSITY</b> Facilities Development and Management Office <small>Marikina Suburb, Tarlac City, Philippines 3300</small>	PROJECT TITLE:	PREPARED BY:	CHECKED BY:	REQUESTING OFFICE:	SHEET CONTENTS:	SHEET NO.:
	AIR CONDITIONING UNIT PIPING SYSTEM	 ENGR. JOHN MYRO B. GANARA <small>Mechanical Engineer - OFDM</small>	 AR. ARLEN M. DIEB <small>INC-DIRECTOR, OFDM</small>	 MS. CYNTHIA M. BOGNOT <small>DIRECTOR, LME</small>	AS SHOWN	M 15
	PROJECT LOCATION:				TARLAC STATE UNIVERSITY	DATE:



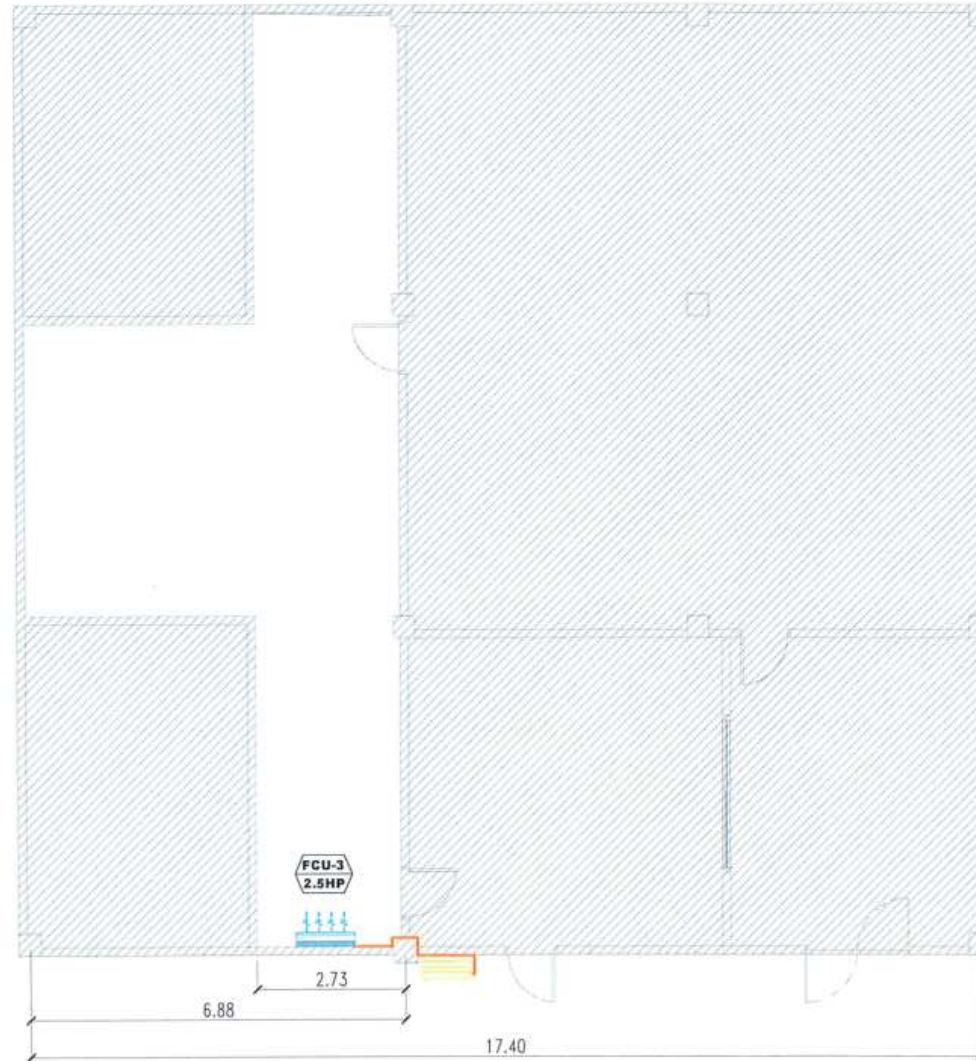
**LEGEND:**

	- AC INDOOR UNIT (FCU)
	- AC OUTDOOR UNIT
	- COPPER TUBE

UNIT	LOCATION	TYPE	REMARKS
FCU-3 2.5HP	ENGINEERING BUILDING	WALL MOUNTED	ADDITIONAL

**NOTE:**

- THE PROPOSED LAYOUT FOR THE LOCATION OF THE AIR CONDITIONING UNIT IS IN ACCORDANCE WITH THE INFORMATION GIVEN BY THE REQUESTING OFFICE.
- VERIFY ON SITE THE PROPOSED ACTUAL LOCATIONS (HEIGHT AND DISTANCE) OF EQUIPMENT (INDOOR AND OUTDOOR UNIT) PRIOR TO CONSTRUCTION.




**ENGINEERING LIBRARY AIR CONDITIONING SYSTEM LAYOUT**  
SCALE 1:100 M




**TARLAC STATE UNIVERSITY**  
Facilities Development and Management Office  
Ranudo Bldg., Tarlac City, Philippines 3300

PROJECT TITLE:	AIR CONDITIONING UNIT PIPING SYSTEM
PROJECT LOCATION:	TARLAC STATE UNIVERSITY

PREPARED BY:	
	ENGR. JOHN MYRO B. GANARA MECHANICAL ENGINEER, OPM

CHECKED BY:	
	AR. ARLENE M. GUIEB OIC-DIRECTOR, OPM


REQUESTING OFFICE:	
	MS. CYNTHIA M. BOGNOT DIRECTOR, LMS

SHEET CONTENTS:	AS SHOWN	SHEET NO:	M 16
		PAGE NO:	16 / 19
DATE:			

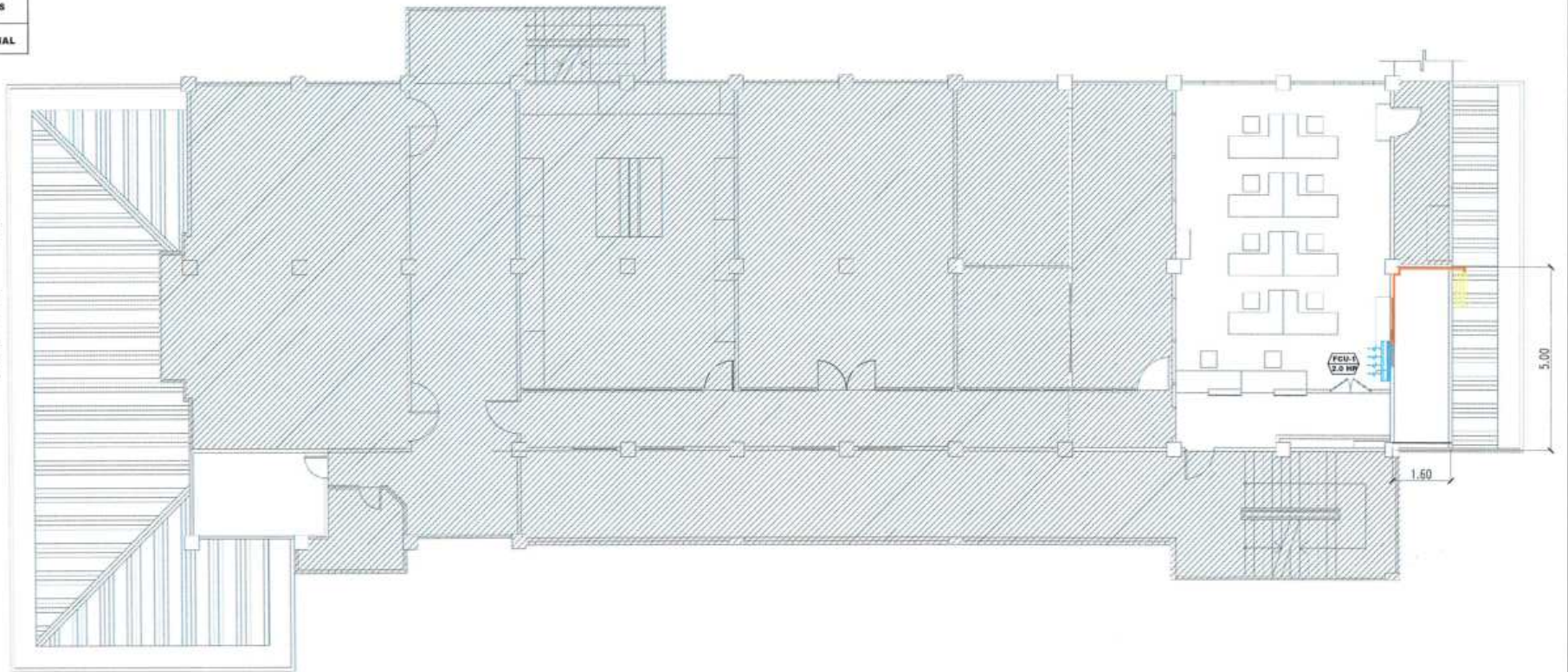


**LEGEND:**



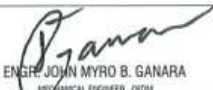

	- AC INDOOR UNIT (FCU)
	- AC OUTDOOR UNIT
	- COPPER TUBE

UNIT	LOCATION	TYPE	REMARKS
	MIS OFFICE	WALL MOUNTED	ADDITIONAL

- NOTE:**
- THE PROPOSED LAYOUT FOR THE LOCATION OF THE AIR CONDITIONING UNIT IS IN ACCORDANCE WITH THE INFORMATION GIVEN BY THE REQUESTING OFFICE.
  - VERIFY ON SITE THE PROPOSED ACTUAL LOCATIONS (HEIGHT AND DISTANCE) OF EQUIPMENT (INDOOR AND OUTDOOR UNIT) PRIOR TO CONSTRUCTION.



**MIS OFFICE AIR CONDITIONING SYSTEM LAYOUT**  
SCALE 1:130 M

  <p><b>TARLAC STATE UNIVERSITY</b> Facilities Development and Management Office Naranda Boulevard, Tarlac City, Philippines 3100</p>	PROJECT TITLE:	PREPARED BY:	CHECKED BY:	REQUESTING OFFICE:	SHEET CONTENTS:	SHEET NO.:
	AIR CONDITIONING UNIT PIPING SYSTEM	 ENGR. JOHN MYRO B. GANARA MECHANICAL ENGINEER, QEDV	 AR. ARLEIDY GUIAB OIC-DIRECTOR, OFDM	DR. MARLON V. GAMIDO DIRECTOR, OFDM	AS SHOWN	M-17
PROJECT LOCATION:	TARLAC STATE UNIVERSITY				DATE:	17 / 19



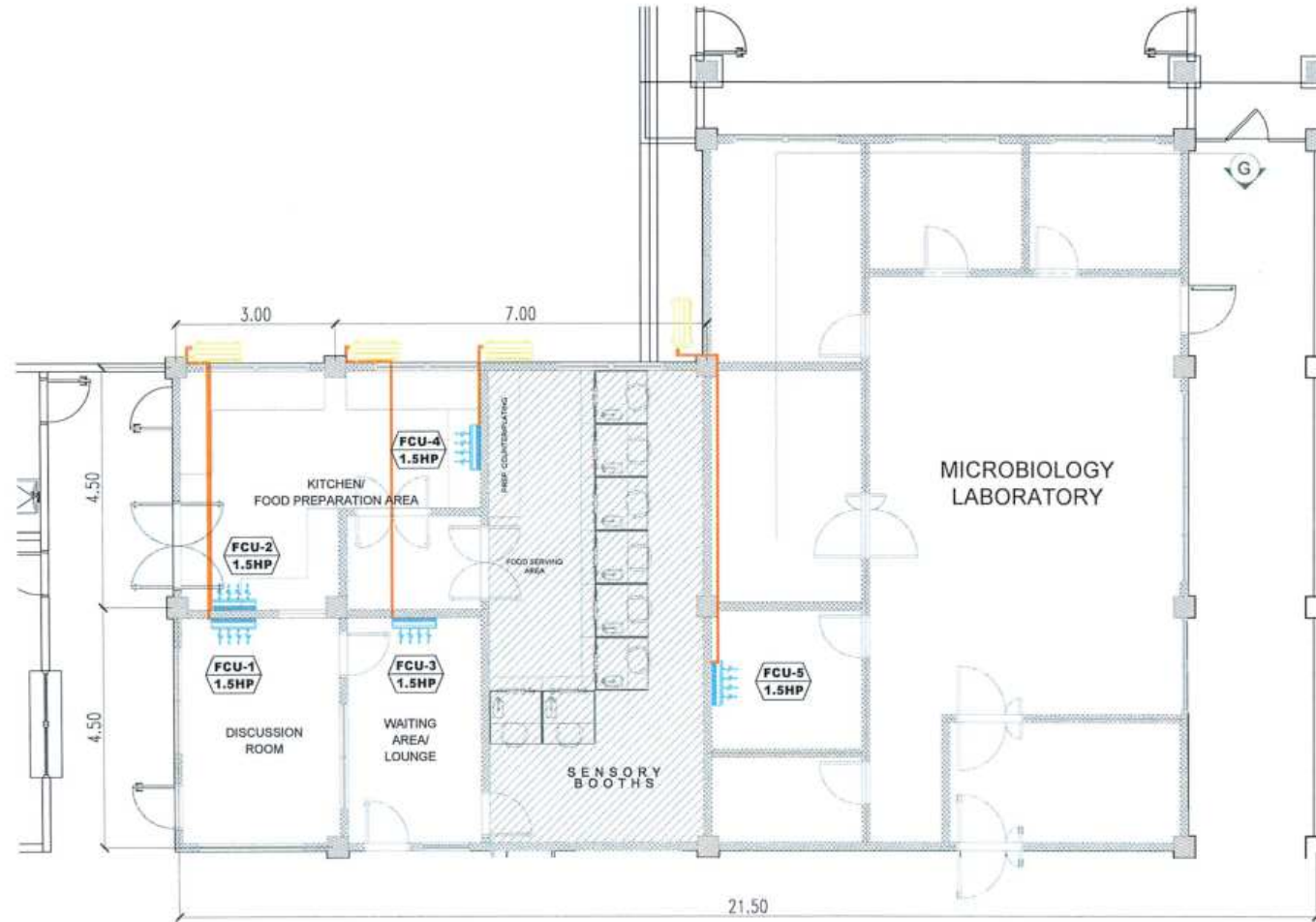
**LEGEND:**

	- AC INDOOR UNIT (FCU)
	- AC OUTDOOR UNIT
	- COPPER TUBE


UNIT	LOCATION	TYPE	REMARKS
FCU-1 1.5 HP	SENSORY LABORATORY	WALL MOUNTED	ADDITIONAL
FCU-2 1.5 HP	SENSORY LABORATORY	WALL MOUNTED	ADDITIONAL
FCU-3 1.5 HP	SENSORY LABORATORY	WALL MOUNTED	ADDITIONAL
FCU-4 1.5 HP	SENSORY LABORATORY	WALL MOUNTED	ADDITIONAL
FCU-5 1.5 HP	MICROBIOLOGY AREA	WALL MOUNTED	ADDITIONAL

**NOTE:**

- THE PROPOSED LAYOUT FOR THE LOCATION OF THE AIR CONDITIONING UNIT IS IN ACCORDANCE WITH THE INFORMATION GIVEN BY THE REQUESTING OFFICE.
- VERIFY ON SITE THE PROPOSED ACTUAL LOCATIONS (HEIGHT AND DISTANCE) OF EQUIPMENT (INDOOR AND OUTDOOR UNIT) PRIOR TO CONSTRUCTION.



**CENTER FOR FOOD TECHNOLOGY AND RESEARCH AIR CONDITIONING SYSTEM LAYOUT**  
SCALE 1:50 M

 <b>TARLAC STATE UNIVERSITY</b> Facilities Development and Management Office <small>Ranudo Boulevard, Tarlac City, Philippines 3309</small>	PROJECT TITLE:	PREPARED BY:	CHECKED BY:	REQUESTING OFFICE:	SHEET CONTENTS:	SHEET NO.:
	AIR CONDITIONING UNIT PIPING SYSTEM	ENGR. JOHN MYRO B. GANARA <small>REGISTERED ENGINEER - OCEAN</small>	AR. ARLEN M. GOJEB <small>DEC-DIRECTOR, OFDM</small>	DR. LEAH T. MATIAS <small>DIRECTOR, CFTR</small>	AS SHOWN	M 18
PROJECT LOCATION:	TARLAC STATE UNIVERSITY				DATE:	18/19



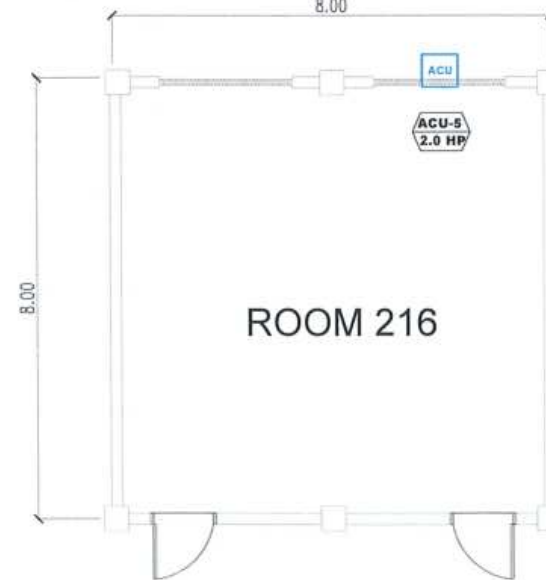
**LEGEND:**

	- AC INDOOR UNIT (FCU)
	- AC OUTDOOR UNIT
	- COPPER TUBE

UNIT	LOCATION	TYPE	REMARKS
ACU-1 2.0 HP	DEAN'S OFFICE	WINDOW TYPE	REPLACEMENT
ACU-2 2.0 HP	ACCREDITATION ROOM	WINDOW TYPE	REPLACEMENT
ACU-3 2.0 HP	ACCREDITATION ROOM	WINDOW TYPE	REPLACEMENT
ACU-4 2.0 HP	RESEARCH AND EXTENSION OFFICE	WINDOW TYPE	REPLACEMENT
ACU-5 2.0 HP	ROOM 216	WINDOW TYPE	REPLACEMENT

**NOTE:**

- THE PROPOSED LAYOUT FOR THE LOCATION OF THE AIR CONDITIONING UNIT IS IN ACCORDANCE WITH THE INFORMATION GIVEN BY THE REQUESTING OFFICE.
- VERIFY ON SITE THE PROPOSED ACTUAL LOCATIONS (HEIGHT AND DISTANCE) OF EQUIPMENT (INDOOR AND OUTDOOR UNIT) PRIOR TO CONSTRUCTION.



**COLLEGE OF BUSINESS AND ACCOUNTANCY AIR CONDITIONING SYSTEM LAYOUT**  
SCALE 1:100 M




TARLAC STATE UNIVERSITY  
Facilities Development and  
Management Office  
Kamala Bldg., Tarlac City, Philippines 3100

PROJECT TITLE:	AIR CONDITIONING UNIT PIPING SYSTEM
PROJECT LOCATION:	TARLAC STATE UNIVERSITY

PREPARED BY:	
ENGR. JOHN MYRO B. GANARA	MEDICAL ENGINEER, OPM

CHECKED BY:	
AR. ARLEN M. GUIEB	DEC. DIRECTOR, OPM

REQUESTING OFFICE:	
DR. RONEL PAMILILIO	DEAN, CB

SHEET CONTENTS:	AS SHOWN	SHEET NO.:	M 19
DATE:	19/19	PAGE NO.:	